

JCB NXT 245HDLR

INTELLI
CONTROL



40 FT
DIG DEPTH

51 FT
DIG REACH

THE NXT LEVEL

Engine Power : 104 kW (140 hp) | Bucket Capacity : 0.45 cu.m | Operating Weight : 23,850 kg



Take your business to THE NXT LEVEL, with the JCB NXT 245HDLR Tracked Excavator.

JCB presents the JCB NXT 245HDLR Tracked Excavators, Powered by IntelliControl and technology to take your business to the NXT level. IntelliControl is a new intelligent way to offer excellent fuel efficiency and productivity, as required by the user, with utmost ease of use and control on the machine operation, maintenance and safety. IntelliControl offers 3 power modes, across 10 engine speed bands and takes best in class fuel efficiency to the NXT level.

With improved reliability and durability, the JCB NXT 245HDLR comes with an advanced telematics system - JCB LiveLink, which is CAN based technology that keeps you connected for total control over machine improving your business efficiency.

Backed by industry's finest customer support network, always look for a better way with JCB.

Take your business to THE NXT LEVEL, with the new JCB NXT 245HDLR Tracked Excavators.



NXT LEVEL OF RELIABILITY STRENGTH INSIDE AND OUTSIDE.

Strengthened top & bottom plates at both ends for high life in arduous applications.



Reinforcements on key locations to enhance life of the arm.



Heavy-duty upper frame with additional strengthening at the bottom.



Heavy-duty LC X-Frame. Strengthened idler and top section.



Proven hydraulic components and filtration system for longer life.



Strong heavy-duty bucket (0.45 cu.m).



NXT LEVEL OF PRODUCTIVITY

GET NXT LEVEL OF PERFORMANCE WITH NEW POWER MODES FOR UNMATCHED OUTPUT.



3 User friendly modes

Power		Usage
P+	Power Plus	Provides maximum output. Suitable for high output in heavy-duty strata.
P	Power	For high output needs.
eco	Economy	For general duty operations & low fuel consumption.



Excellent bucket and arm tear-out forces resulting in higher output.

40 FT
DIG DEPTH

51 FT
DIG REACH



NXT LEVEL OF EFFICIENCY

THE BEST-IN-CLASS EFFICIENCY WITH ENERGY SAVING **ecoHYDRAULICS** OFFERS NXT LEVEL OF SAVINGS.



ecoHYDRAULICS minimise the hydraulic losses resulting in enhanced fuel efficiency, thus increasing savings.



Optimises engine and hydraulic power to maximise fuel savings.

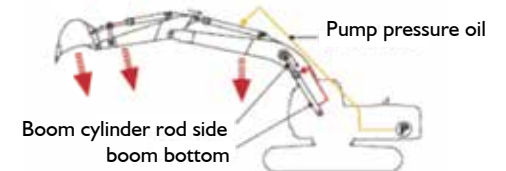


Auto idler reduces engine speed automatically when machine is not at work, thus saving fuel.



one-touch deceleration system, helps to reduce engine rpm by just giving one touch to the switch.

Regenerative hydraulic system



Regenerative circuits for higher operating speeds

*T&C Apply.

NXT LEVEL OF INTELLIGENCE

INTELLI CONTROL IS A NEW INTELLIGENT WAY TO OFFER EXCELLENT FUEL EFFICIENCY AND PRODUCTIVITY WITH THE UTMOST EASE OF USE AND CONTROL.



Operational information

Quantity of fuel left in tank

Engine speed & operating mode status

Trip meter

Auto idle status & time setting

Machine operating parameters

Rear view camera option

Breaker hour meter



Maintenance information

Maintenance due information

Colour coded health alerts based on severity

Hour meter, counting of attachment operation

Easy diagnostic system

Service warning alerts

NXT LEVEL OF CONNECT



NOW BE ASSURED OF YOUR JCB EXCAVATOR'S SERVICE, OPERATION AND SECURITY WITH THE ADVANCED TELEMATICS SYSTEM CALLED LIVELINK.

Security

Fuel level drop alert via SMS/e-mail

Alerts in case the machine is used outside the set hours

Geofencing alerts

Reports & alerts

Customised reports on machine performance

Easier fleet management

Periodic reports

Safety

Engine high rpm shut down report

Long engine idling report

Critical health alerts

Operation & performance monitoring

Idle time monitoring

Instantaneous fuel level monitoring

Working hour monitoring

Proactive maintenance & usage

Maintenance reminders



NXT LEVEL OF EASY MAINTENANCE AND SAFETY

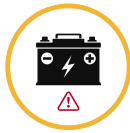
THE JCB NXT 245HDLR ENSURES EASE OF MAINTENANCE AND ALERTS ON DISPLAY.

Class-leading maintenance interval

Service intervals on bucket operation	
Hydraulic oil	Every 5,000 hours
Hydraulic oil filters	Every 1,000 hours
Engine oil & oil filter	Every 500 hours



Critical health alerts



Battery disconnect switch



Service due reminder



Radial seal air filter

First-in-class safety features



Hose burst check valve on boom and arm



Selectable swing lock



Hydraulic accumulator



2 Go system



Hydraulic interlock to start the engine



Engine & hydraulic overheating safety system



Advanced self-diagnosis system with error codes and multi-coloured warning alerts for easy and quick maintenance.



Display of all critical parameters accessed through internal menu for easy health monitoring.



Alerts about high engine coolant temp, low engine oil pressure & high hydraulic oil temperature.



Wire mesh guard on the cooling pack to prevent entry of debris or other objects.



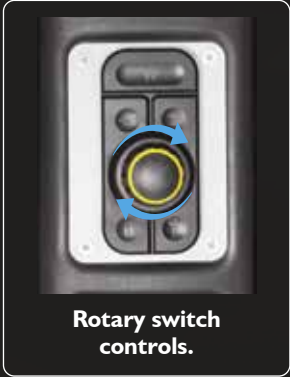
Compact size engine bonnet helps in easy and effortless handling during the maintenance.



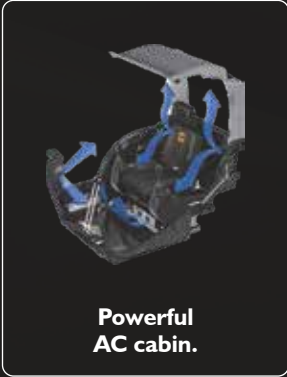
Battery disconnect switch helps to isolate the machine's electric system easily, whenever required.

NXT LEVEL OF COMFORT

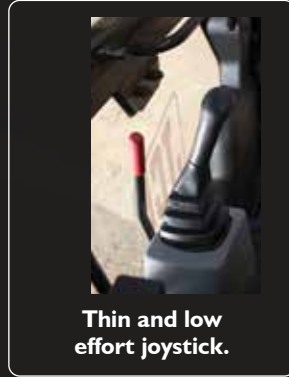
A COMFORTABLE OPERATOR IS A PRODUCTIVE OPERATOR.



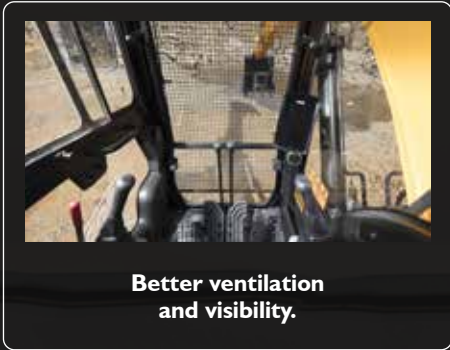
Rotary switch controls.



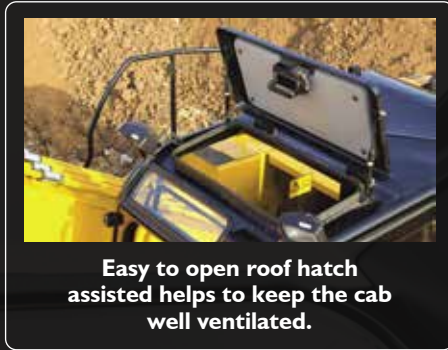
Powerful AC cabin.



Thin and low effort joystick.



Better ventilation and visibility.



Easy to open roof hatch assisted helps to keep the cab well ventilated.



5 Working lights for better illumination and help the operator to work efficiently.



6 nos. viscous mounts to absorb vibration that ensures comfort for the operator.

NXT LEVEL OF CARE

GIVE YOUR MACHINE EXTENDED WARRANTY AND CARE.

- JCB Careplus is an extended warranty programme that comes into effect after the machine standard warranty expires.
- JCB Careplus can be purchased within the 1st year from the sale of the machine.
- The programme offers you peace of mind and saves your maintenance cost even after your machine standard warranty expires.



Extended Warranty Programme

BENEFITS OF JCB CAREPLUS



No limits on number of claims



Preventive maintenance service*



Nationwide coverage*



JCB skilled manpower support



Maximum productivity



Maximum uptime



Maximum performance

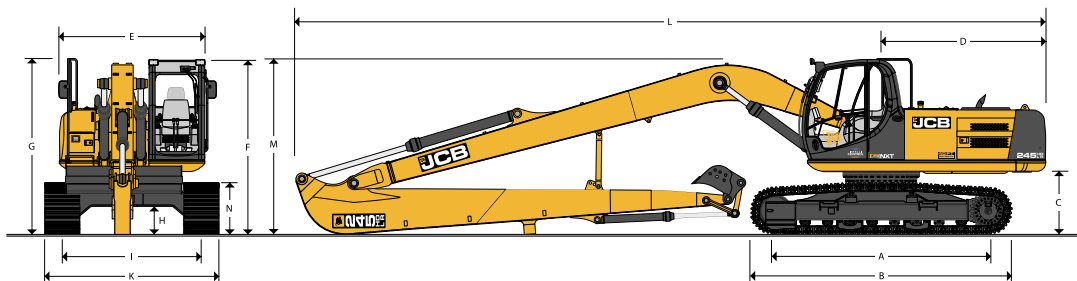


Breakdown cost protection



Better resale value

*T&C Apply



WEIGHT AND GROUND BEARING PRESSURE

Standard machine with bucket, operator, full capacity lubes and fuel		
	600mm Track Chain	800mm Track Chain
Max operating weight	23,300 kg	23,850 kg
Ground bearing pressure	0.38 kg / sq cm	0.49 kg / sq cm

STATIC DIMENSIONS

A Track length on ground	m	3.66
B Undercarriage overall length	m	4.47
C Counterweight clearance	m	1.05
D Tail swing radius	m	2.83
E Overall width of the super structure	m	2.55
F Height over cab	m	3.06
G Height over handrail	m	2.78
H Ground clearance	mm	456
I Track gauge	m	2.39
K Width over tracks (600 mm)	m	2.99
Width over tracks (800 mm)		3.19
L Transport length	m	1.26
M Transport height	m	3.05
N Track height	m	890

WORKING RANGE

	Unit	Arm length (6.4 m)
Maximum dig reach	m	15.62
Maximum dig reach at ground level	m	15.51
Maximum digging depth	m	12.04
Maximum digging height	m	12.69
Maximum loadover height	m	10.4
Maximum vertical wall cut depth	m	11.46
Minimum swing radius	m	5.45
Bucket rotation	deg.	182
Bucket breakout force ISO 6015	kN	65.5
Arm breakout force ISO 6015	kN	44

SWING SYSTEM

Swing motor	: Axial piston type.
Swing brake	: Hydraulic braking, electrically operated spring applied disc type parking brake.
Final drive	: Planetary reduction.
Swing gear	: Large diameter, internally toothed fully sealed grease bath lubricated.
Swing speed	: 12 RPM

ENGINE

Model	: CUMMINS6BT 5.9C
Gross Power	: 140 HP @2000 rpm
Piston displacement	: 5.88 L

TRACK DRIVE

Gradeability	: 70% (35 deg.) continuous
Travel speed	: 3.8 km/h
Tractive effort	: 166 kN

EXCAVATOR BUCKET

0.45 cu.m

SERVICE CAPACITIES

Fuel tank	343 L
Engine coolant	25.5 L
Engine oil	19 L
Hydraulic system	203 L
Hydraulic tank	120 L
Swing device	5 L
Travel device	2 x 5 L

UNDERCARRIAGE

	JCB NXT 245HDLR
Track Shoe	600 mm /800 mm
Upper & lower rollers	Heattreated, sealed and lubricated.
Track adjustment	Sealed and lubricated, with spring enhanced recoil.
No. of track guides	2 per side
No. of lower rollers	8 Per side
No. of upper rollers	2 per side
No. of track shoes	49 per side

HYDRAULIC SYSTEM

Pumps	
Main pumps	: 2 variable displacement axial piston type.
Maximum flow	: 2 x 220 L/min
Servo pump	: Gear type.
Maximum flow	: 20 L/min
Control valve	
Relief valve settings	: 343 bar
Swing circuit	: 240 bar
Travel circuit	: 343 bar
Pilot control	: 40 bar

STANDARD EQUIPMENT

Auto-Idler
 Work lights: 1 each on boom and main frame
 Additional lights: 2 nos. on cab
 Additional lights: 1 no. on counterweight
 Windscreen wiper
 Engine fan guard
 Undercarriage belly guarding
 Upper structure under covers
 Engine pre-cleaner
 Double element radial type air cleaner with wire mesh protection
 Heavy-duty alternator (75 amp)
 Cabin fan
 Suspension seat
 Cab floor mat
 Rubber covered track pedals
 Removable front lower cab glass
 Tool kit
 Handrail and nonslip walk ways
 Radiator fly screen
 FM Radio and USB music player with speakers
 Cabin guard (front)
 Mirror on RH handrail
 Mirror on cab grabrail glass on front and right hand side of cabin
 LiveLink

OPTIONAL EQUIPMENT

Cabin top guard
 Fully ducted air conditioner unit with heater
 First aid kit
 Fire extinguisher
 Refuel pump
 Beacon
 Counterweight mirror

FILTRATION SYSTEM

In-tank	: 150 microns, suction strainer
Main return line	: 10 microns, fibre form element
Pilot line	: 10 microns, paper element.